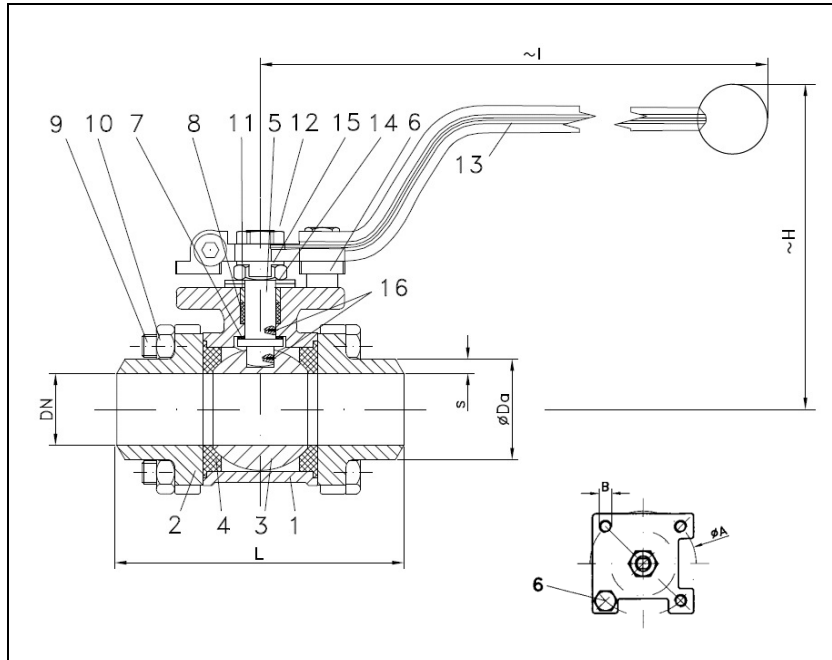


BALL VALVES RK-PROBALL

KH 3T S (NC), 1/4" - 4", PN63/100
casting lever



Ball valves RK-Proball KH 3T all sizes are also available with pneumatical, electrical or hydraulic actuators.

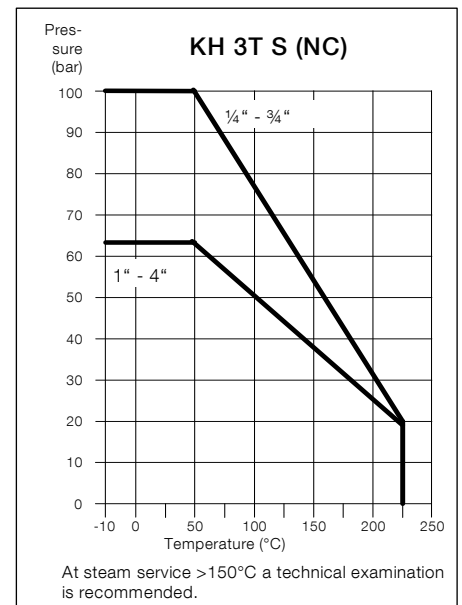
No.	Part	Material	Material
1	body	1.0619	1.4408
2	cap	1.0619	1.4408
3	ball		1.4408
4	seat		KFG
5	stem		1.4401
6	stop pin		1.4301
7	washer		KFG
8	stem packing		KF
9	hex. schrew		A2-70
10	hex. nut		A2-70
11	thrust washer		1.4301
12	hex. nut		A2-70
13	lever		1.4301
14	plate spring		1.4310
15	locking plate		1.4301
16	antistatic element		1.4401

Ball valve with butt weld ends
full bore
face to face acc. to DIN 3202-S13
butt weld ends acc. to EN 12627

Specification:

Three-piece ball valve, butt weld ends acc. to EN 12627, face to face dimensions acc. to DIN 3202-S13, full bore, blow-out-proof stem, body material stainless steel (1.4408) or steel (1.0619), antistatic device, free of non ferrous metals, seat KFG, stem packing KF, disc spring loaded adjustable, top flange DIN EN ISO 5211, approved by PED, certified acc. to GERMAN clean air act VDI 2440, with lever.

Marking: RK-Proball
Types: KH 3T S (NC)-1.0619
KH 3T S (NC)-1.4408



Ordering example:
KH 3T S (NC), 2", PN 63, 1.4408,

Dimensions

DN mm	DN inch	PN	dimensions (mm)					top flange ISO 5211		Kv-value m ³ /h	torque Nm	weight kg	
			Ø Da	S	H	I	L	Ø A	B				
8	1/4	100	13.7	2.60	72	154	70	F03	36	M5	6	3	0.5
10	3/8	100	17.2	3.35	72	154	70	F03	36	M5	7	3	0.5
15	1/2	100	21.3	2.80	86	169	75	F04	42	M5	10	5	0.7
20	3/4	100	26.9	2.95	93	169	90	F04	42	M5	25	10	0.9
25	1	63	33.7	3.45	105	222	100	F05	50	M6	35	11	1.3
32	1 1/4	63	42.4	5.20	110	222	110	F05	50	M6	46	20	1.9
38	1 1/2	63	48.3	5.15	124	222	125	F05	50	M6	80	26	2.9
49	2	63	60.3	5.65	146	304	150	F07	70	M8	110	30	4.7
65	2 1/2	63	76.1	5.55	170	304	190	F07	70	M8	310	70	9.7
80	3	63	88.9	4.45	176	354	220	F10	102	M10	360	90	14.6
100	4	63	114.3	7.15	207	354	270	F10	102	M10	820	120	25.8

06/2016

Subject to modification.